



Customizable,
High-Quality, Heavy Duty,
Industrial-Grade Actuators

INDUSTRIAL MOTION



TiMOTION ELECTRONIC LINEAR ACTUATORS – MOTION TECHNOLOGY THAT HELPS PROVIDE A CLEANER, BETTER FUTURE

Many industrial applications require heavy-duty automation on a large scale — especially for agricultural, construction, mining, ventilation, and process control machinery, among others. The technology is out there, and it's only getting better. Equipment manufacturers are increasingly turning to electric linear actuators as a cost-efficient and reliable alternative to previous industry standards, such as hydraulic and pneumatic motion systems. TiMOTION's Industrial Motion product line is shown within this catalog, as well as additional information about what we offer and the full benefits of our linear actuator technology.

JP series

TiMOTION's JP series family is designed with an inline actuator appearance. All the products in the JP series are ideally suited for high or low load required industrial applications where up to IP69K dust and liquid ingress protection is necessary. The JP series is made for use in limited spaces without sacrificing power.



JP3 - Page 14

Max. load

2,000N (push/pull)

Max. speed at max. load

3.5mm/s

Max. speed at no load

23.5mm/s

Retracted length

≥ Stroke + 217mm

IP rating

IP69K



JP4 - Page 16

Max. load

4,500N (push); 3,000N (pull)

Max. speed at max. load

2.5mm/s

Max. speed at no load

27.5mm/s

Retracted length

≥ Stroke + 289mm

IP rating

IP69K



MA series

TiMOTION's MA series family is specifically designed for harsh working environments, requiring a durable, long-life solution. All of our MA series actuators are ideal for the heavy-duty machinery, industrial equipment and off-road vehicles. Also, they all comply with IP69K protection that will withstand high-pressure water jets, and the ingress of dust and other solid contaminants.



MA1 - Page 18

Max. load

ACME screw: 2,500N (push/pull)
Ball screw: 4,500N (push/pull)

Max. speed at max. load

15mm/s (ACME screw, DC motor)
14.8mm/s (Ball screw, DC motor)

Max. speed at no load

31.2mm/s (ACME screw, DC motor)
59mm/s (Ball screw, DC motor)

Retracted length

≥ Stroke + 160mm
(ACME screw, without POT)
≥ Stroke + 201mm
(Ball screw, without POT)

IP rating

IP69K



MA2 - Page 20

Max. load

8,000N (push); 4,000N (pull)

Max. speed at max. load

5.5mm/s

Max. speed at no load

52.5mm/s

Retracted length

≥ Stroke + 131mm

IP rating

IP69K



MA2T - Page 22

Max. load

8,000N (push); 4,000N (pull)

Max. speed at max. load

5.1mm/s

Max. speed at no load

52.5mm/s

Retracted length

≥ Stroke + 131mm

IP rating

IP69K



NEW

MA3 - Page 24

Max. load

16,000N (push/pull)

Max. speed at max. load

6.2mm/s

Max. speed at no load

172.5mm/s

Retracted length

≥ Stroke + 200mm

IP rating

IP69K



MA4 - Page 26

Max. load

2,000N (push/pull)

Max. speed at max. load

5.5mm/s

Max. speed at no load

43mm/s

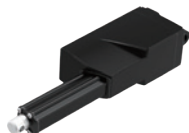
Retracted length

≥ 215mm

(depending on chosen options)

IP rating

IP69K



MA5 - Page 28

Max. load

3,500N (push); 2,000N (pull)

Max. speed at max. load

2.4mm/s

Max. speed at no load

56.5mm/s

Retracted length

≥ 200mm

(depending on chosen options)

IP rating

IP69K

TA series

TiMOTION's TA series family is a well-developed product line for the industrial market segment. All the products in the TA series have a compact design, and can meet the demands of high-force, high-speed, and low noise requirements. The TA series is recommended for use in small spaces where force or capability cannot be sacrificed.



TA2 - Page 30

Max. load

1,000N (push/pull)

Max. speed at max. load

7.6mm/s

Max. speed at no load

67.5mm/s

Retracted length

≥ Stroke + 105mm
(without output signals)

IP rating

IP66D



TA2P - Page 32

Max. load

3,500N (push); 2,000N (pull)

Max. speed at max. load

2.4mm/s

Max. speed at no load

56.5mm/s

Retracted length

≥ Stroke + 108mm
(with Hall sensors or without
output signals)

IP rating

IP66D



NEW

TA2PAC - Page 34

Max. load

2,000N (push/pull)

Max. speed at max. load

7.5mm/s

Max. speed at no load

52mm/s

Retracted length

> 235mm
(depending on chosen options)

IP rating

IP66D



TA16 - Page 36

Max. load

3,500N (push/pull)

Max. speed at max. load

6.2mm/s

Max. speed at no load

58.2mm/s

Retracted length

≥ Stroke + 112mm

IP rating

IP66D



TA21 - Page 38

Max. load

10,000N (push); 6,000N (pull)

Max. speed at max. load

6.3mm/s

Max. speed at no load

24.7mm/s

Retracted length

≥ 67mm



NEW

TA29AC - Page 40

Max. load

4,000N (push/pull)

Max. speed at max. load

4.5mm/s

Max. speed at no load

5.5mm/s

Retracted length

> 302mm
(depending on chosen options)

IP rating

IP66W

VN series



VN1 - Page 42

Max. load

3,500N (push/pull)

Max. speed at max. load

4.2mm/s

Max. speed at no load

10.4mm/s

Retracted length

≥ 181mm

(DC version, w/o T-Smart;
depending on chosen options)
≥ 401mm

(AC version; depending on
chosen options)

IP rating

IP66



NEW

VN2 - Page 44

Max. load

500N (push/pull)

Max. speed at max. load

8.35mm/s

Max. speed at no load

10.8mm/s

Retracted length

≥ Stroke + 189mm

IP rating

IP66

TiMOTION's VN series is designed especially for automated ventilation systems. Whether trying to improve the indoor air quality in the building through lower peak summer temperatures or enhancing the interior climate in livestock houses, our VN series can meet the growing demand for ventilation applications. All the actuator in our VN series have metallic appearance with an IP66 rating.

TL series

TiMOTION's TL (lifting column) series is made up of two or three extruded aluminum tubes of rectangular shape that give the system great stability and a high stroke with reduced retracted length. Our electric lifting columns are perfect for industrial applications such as height-adjustable workstations, screens and lifting tables.



TL3 - Page 46

Max. load
4,000N (push)

Self-locking force
4,000N

Max. dynamic bending moment
1,000Nm

Max. speed at max. load
13.7mm/s

Max. speed at no load
39mm/s

Retracted length
 $\geq \text{Stroke}/2 + 150\text{mm}$

IP rating
IPX6



TL17 - Page 48

Max. load
2,000N (push)

Max. dynamic bending moment
250Nm

Max. speed at max. load
11.5mm/s

Max. speed at no load
41mm/s

Retracted length
 $\geq \text{Stroke}/2 + 150\text{mm}$

IP rating
IPX6



TL18 - Page 50

Max. load
4,500N (push)

Self-locking force
4,500N

Max. dynamic bending moment
250Nm

Max. speed at max. load
6.6mm/s

Max. speed at no load
45mm/s

Retracted length
 $\geq \text{Stroke} + 147\text{mm}$



TL18AC - Page 52

Max. load
4,500N (push)

Self-locking force
4,500N

Max. dynamic bending moment
250Nm

Max. speed at max. load
6.6mm/s

Max. speed at no load
45mm/s

Retracted length
 $\geq 383\text{mm}$

TGM

series

TiMOTION's TGM (Gear Motor) series is primarily designed for height-adjustable table applications. The TGM products allow for fast, smooth and quiet adjustments of built-in spindles through the use of external limit switches. Shafting allows for the mechanical synchronization of dual spindles.



TGM1 - Page 54

Max. rated torque

7.4Nm

Max. speed at max. load

72RPM ($\pm 5\%$)

Max. speed at no load

262.5RPM ($\pm 5\%$)

Output signals

Hall sensors



TGM2 - Page 56

Max. rated torque

18.3Nm

Max. speed at max. load

51RPM ($\pm 5\%$)

Max. speed at no load

108RPM ($\pm 5\%$)

Output signals

Hall sensors



TGM3 - Page 58

Max. rated torque

4.6Nm

Max. speed at max. load

61RPM ($\pm 5\%$)

Max. speed at no load

259RPM ($\pm 5\%$)

Output signals

Hall sensors



TGM4 - Page 60

Max. rated torque

6Nm

Max. speed at max. load

98RPM ($\pm 5\%$)

Max. speed at no load

219RPM ($\pm 5\%$)

Output signals

Hall sensors



TGM7 - Page 62

Max. rated torque

7.2Nm

Max. speed at max. load

78RPM ($\pm 5\%$)

Max. speed at no load

355RPM ($\pm 5\%$)

Output signals

Hall sensors



NEW

TIG1 - Page 64

Max. rated torque

60Nm

Max. speed at max. load

24RPM

Max. speed at no load

40RPM

Output signals

Hall sensor(s)

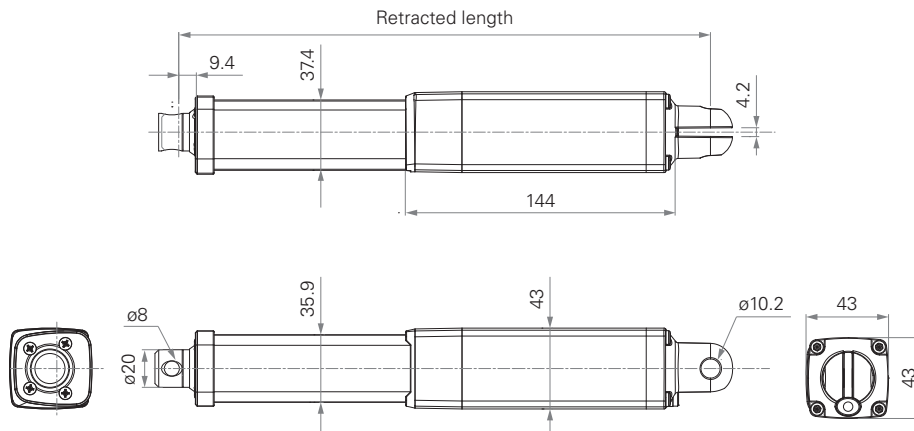
JP3

series



Standard Dimension

(mm)



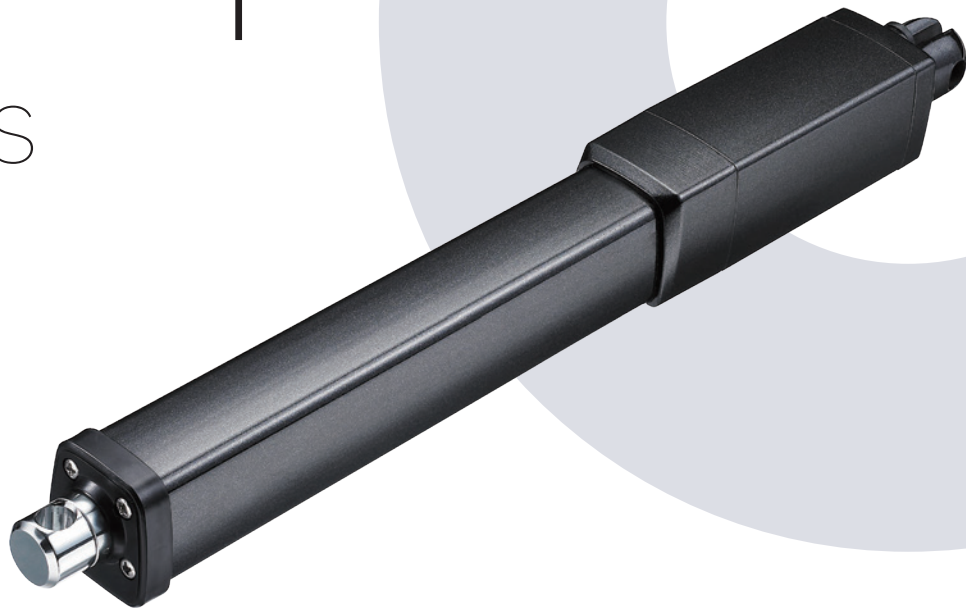
General Features

Max. load	2,000N (push/pull)
Max. speed at max. load	3.5mm/s
Max. speed at no load	23.5mm/s
Retracted length	≥ Stroke + 217mm
IP rating	IP69K
Certificate	UL73
Stroke	20~1000mm

Output signals	Hall sensors
Voltage	12/24V DC; 12/24V DC (PTC)
Color	Black, grey
Operational temperature range	-5°C~+65°C
Operational temperature range at full performance	+5°C~+45°C
Storage temperature range	-40°C~+70°C

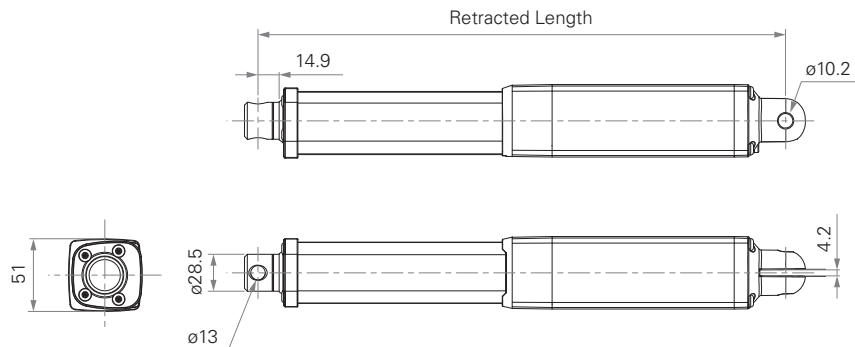
JP4

series



Standard Dimension

(mm)

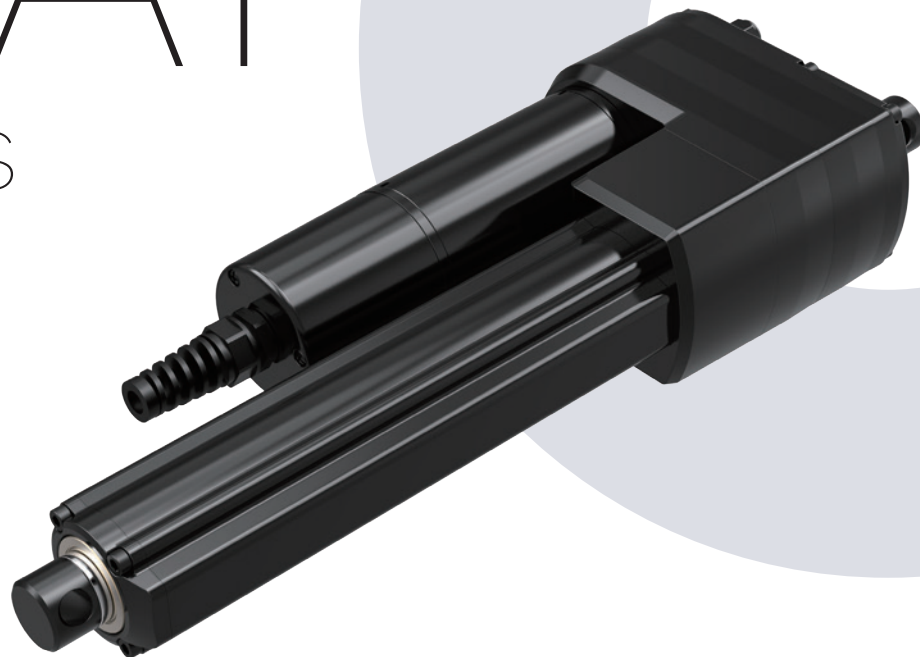


General Features

Max. load	4,500N (push); 3,000N (pull)	Output signals	Hall sensors
Max. speed at max. load	2.5mm/s	Voltage	12/24V DC; 12/24V DC (PTC)
Max. speed at no load	27.5mm/s	Color	Black, grey
Retracted length	≥ Stroke + 289mm	Operational temperature range	-5°C~+65°C
IP rating	IP69K	Operational temperature range at full performance	+5°C~+45°C
Certificate	UL73	Storage temperature range	-40°C~+70°C
Stroke	20~1000mm		

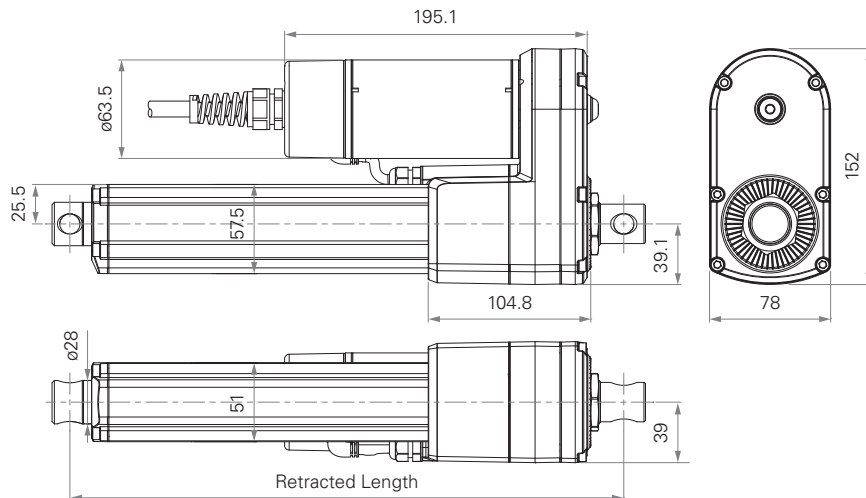
MA1

series



Standard Dimension

(mm)



General Features

Max. load

ACME screw: 2,500N (push/pull)
Ball screw: 4,500N (push/pull)

Max. speed at max. load

15mm/s (ACME screw, DC motor)
14.8mm/s (Ball screw, DC motor)

Max. speed at no load

31.2mm/s (ACME screw, DC motor)
59mm/s (Ball screw, DC motor)

Retracted length

≥ Stroke + 160mm
(ACME screw, without POT)
≥ Stroke + 201mm
(Ball screw, without POT)

IP rating

IP69K

Certificate

UL73, EMC

Stroke

20~1000mm (ACME screw)
50~800mm (Ball screw)

Output signals

Options

Hall sensors, POT

Voltage

Overload clutch,
electromagnetic brake

Spindle

12/24/36V DC; 110/220V AC

Color

ACME or Ball screw

Operational temperature range

Black

-30°C~+65°C

Operational temperature range at full performance

+5°C~+45°C

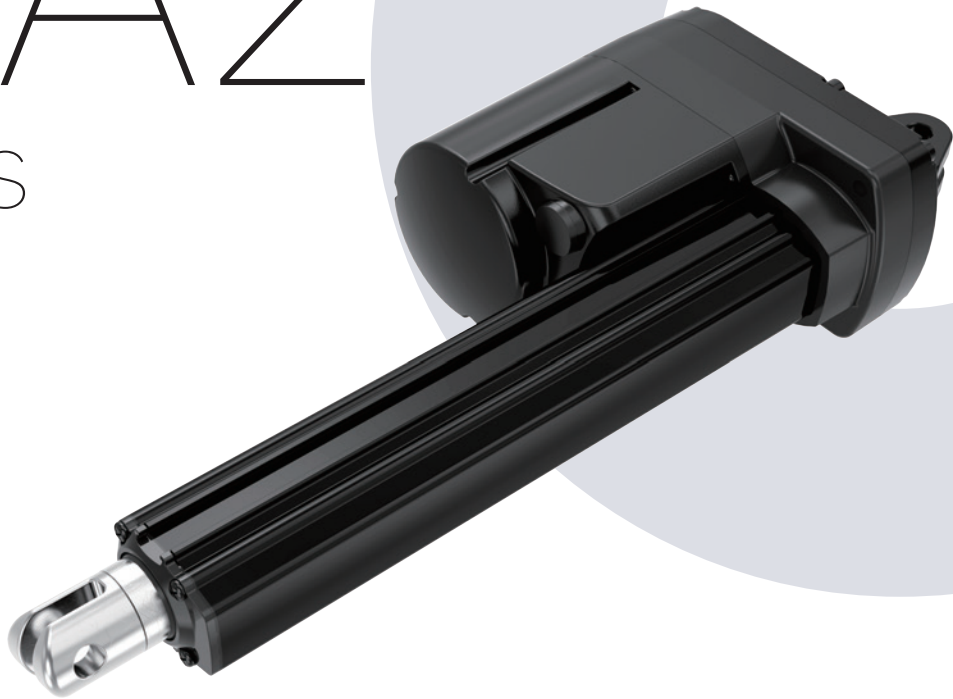
Mechanical brake

Higher duty cycle (25%), corrosion proof

Manual drive

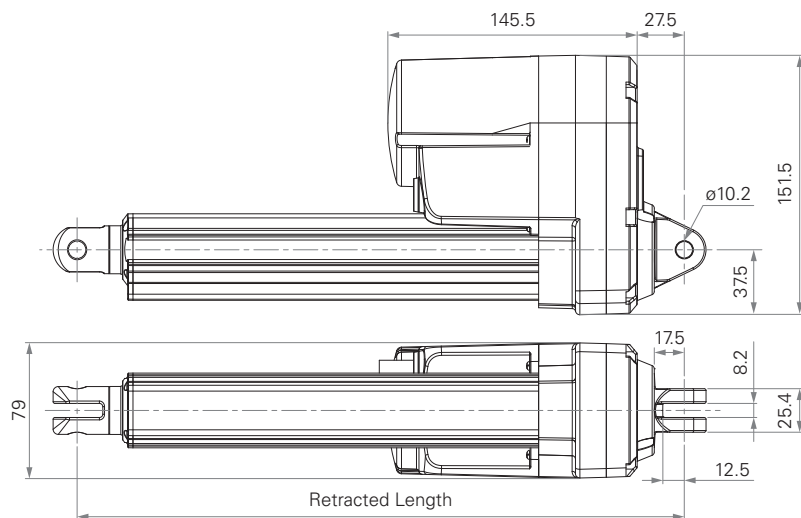
MA2

series



Standard Dimension

(mm)



General Features

Max. load	8,000N (push); 4,000N (pull)
Max. speed at max. load	5.5mm/s
Max. speed at no load	52.5mm/s
Retracted length	≥ Stroke + 131mm
IP rating	IP69K
Certificate	UL73, EMC
Stroke	25~1000mm

Output signals	Hall sensors, POT, Reed sensor on the outer tube
-----------------------	--

Voltage	12/24/36/48V DC; 12/24/36/48V DC (thermal control)
----------------	---

Operational temperature range	-30°C~+65°C
--------------------------------------	-------------

Operational temperature range at full performance	+5°C~+45°C
--	------------

Manual drive

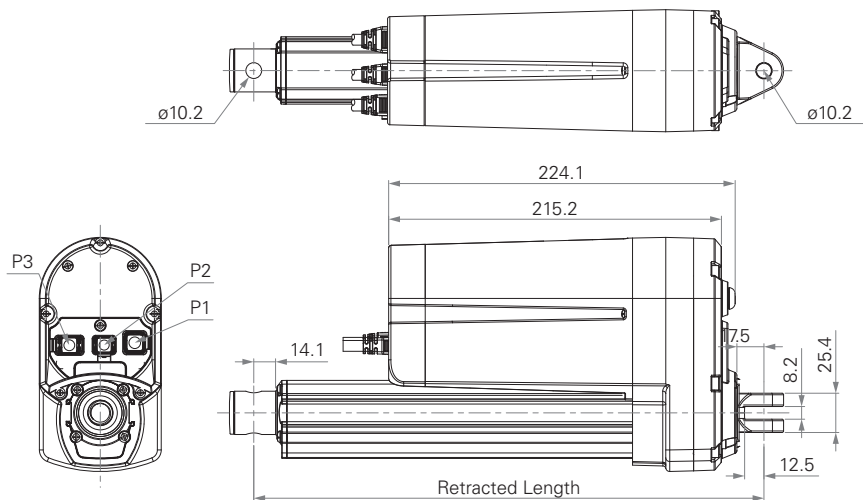
MA2T

series



Standard Dimension

(mm)



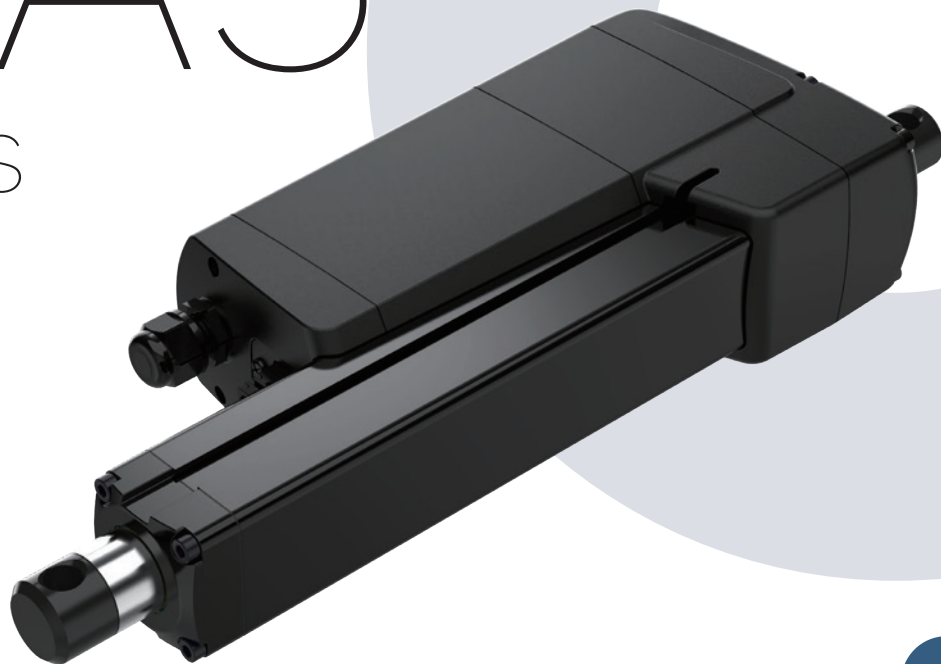
General Features

Max. load	8,000N (push); 4,000N (pull)
Max. speed at max. load	5.1mm/s
Max. speed at no load	52.5mm/s
Retracted length	\geq Stroke + 131mm
IP rating	IP69K
Stroke	25~1000mm
Output signals	Hall sensors, Reed sensor on the outer tube

Options	T-Smart
Voltage	12/24V DC
Operational temperature range	-40°C~+85°C
Operational temperature range at full performance	+5°C~+45°C
Manual drive	

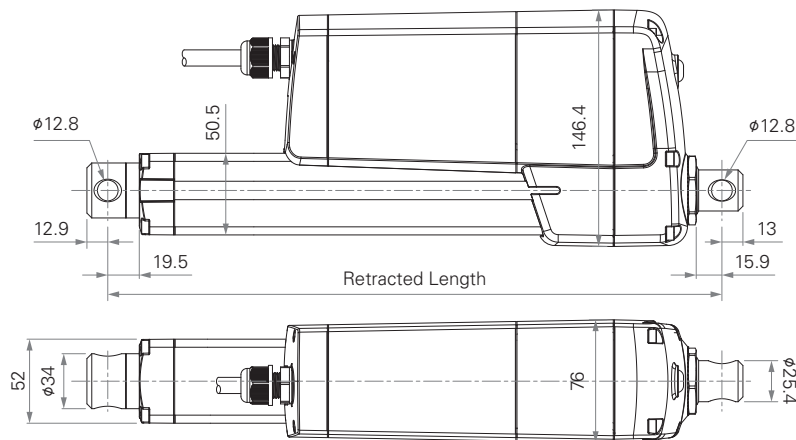
MA3

series



Standard Dimension

(mm)



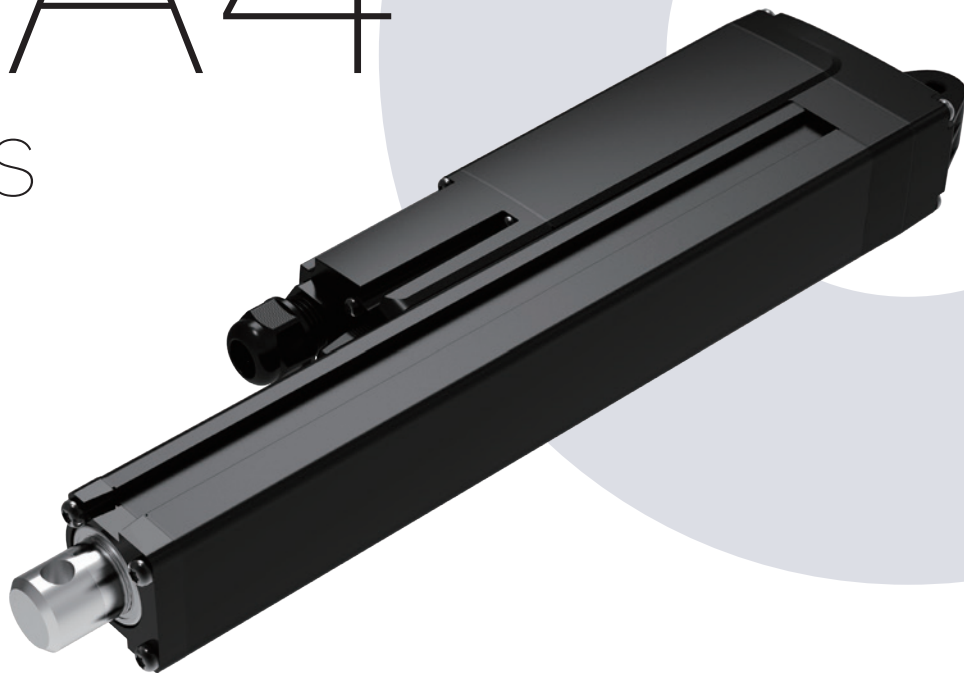
General Features

Max. load	16,000N (push/pull)
Max. speed at max. load	6.2mm/s
Max. speed at no load	172.5mm/s
Retracted length	\geq Stroke + 200mm
IP rating	IP69K
Certificate	UL73, EMC
Stroke	25~1000mm

Output signals	Hall sensors, POT, Reed switch on the outer tube
Voltage	12/24V DC; 12/24V DC (thermal control)
Operational temperature range	-40°C~+85°C
Operational temperature range at full performance	+5°C~+45°C
Manual drive	

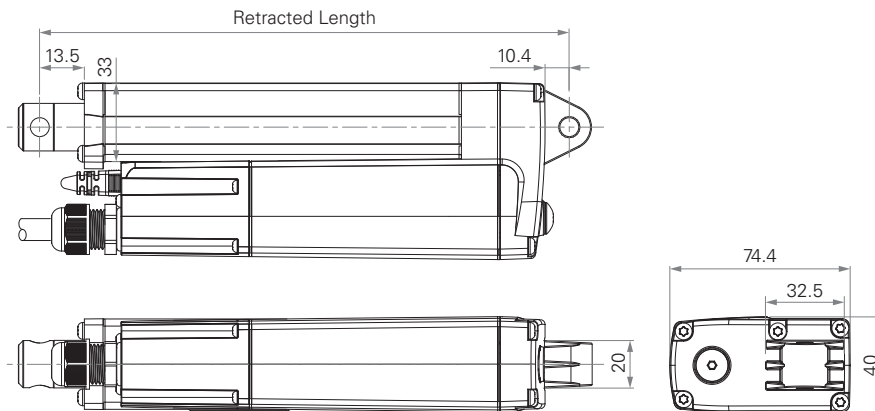
MA4

series



Standard Dimension

(mm)



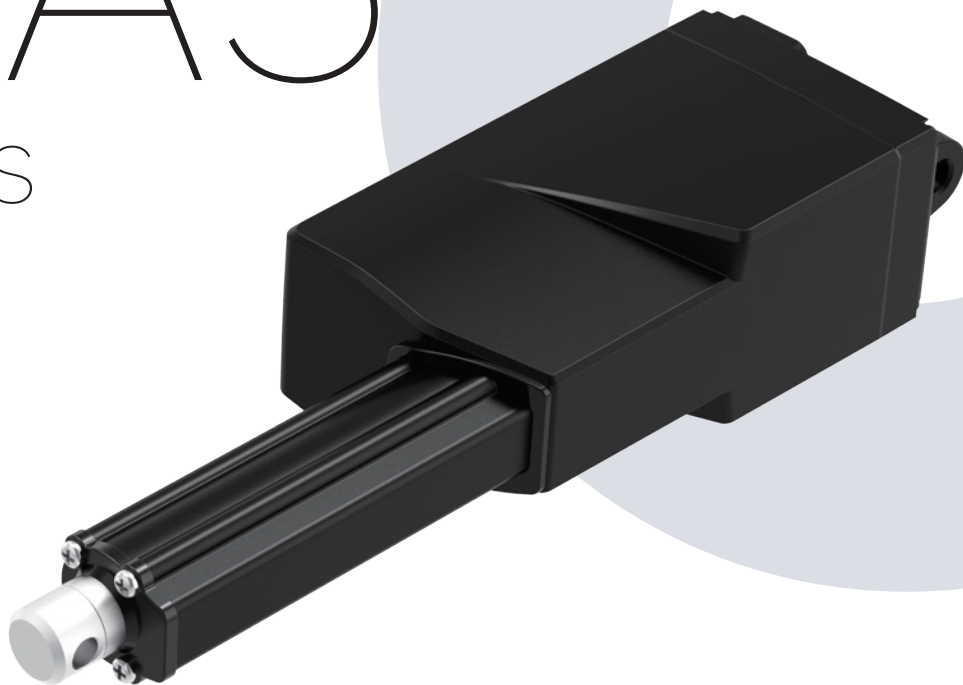
General Features

Max. load	2,000N (push/pull)
Max. speed at max. load	5.5mm/s
Max. speed at no load	43mm/s
Retracted length	≥ 215mm (depending on chosen options)
IP rating	IP69K
Stroke	25~1000mm

Output signals	Adjustable reed switch, mechanical POT, Hall sensor(s)
Options	T-Smart
Voltage	12/24V DC; 12/24V DC (thermal control)
Operational temperature range	-40°C~+85°C
Operational temperature range at full performance	+5°C~+45°C

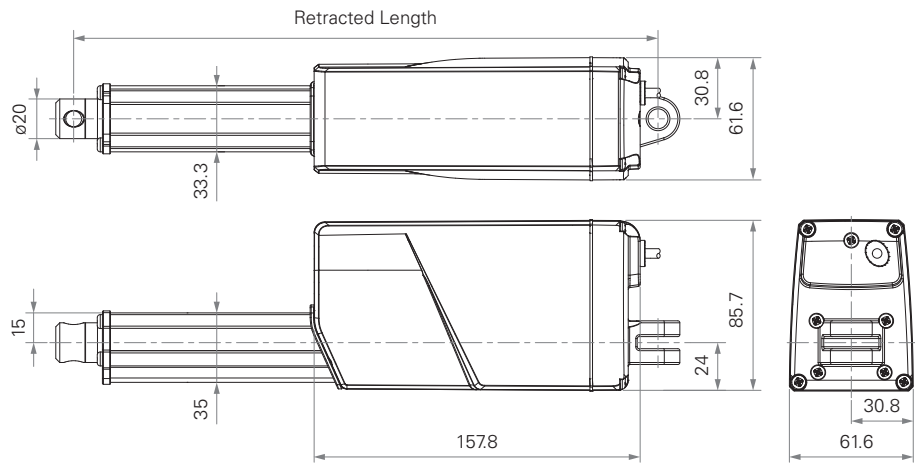
MA5

series



Standard Dimension

(mm)

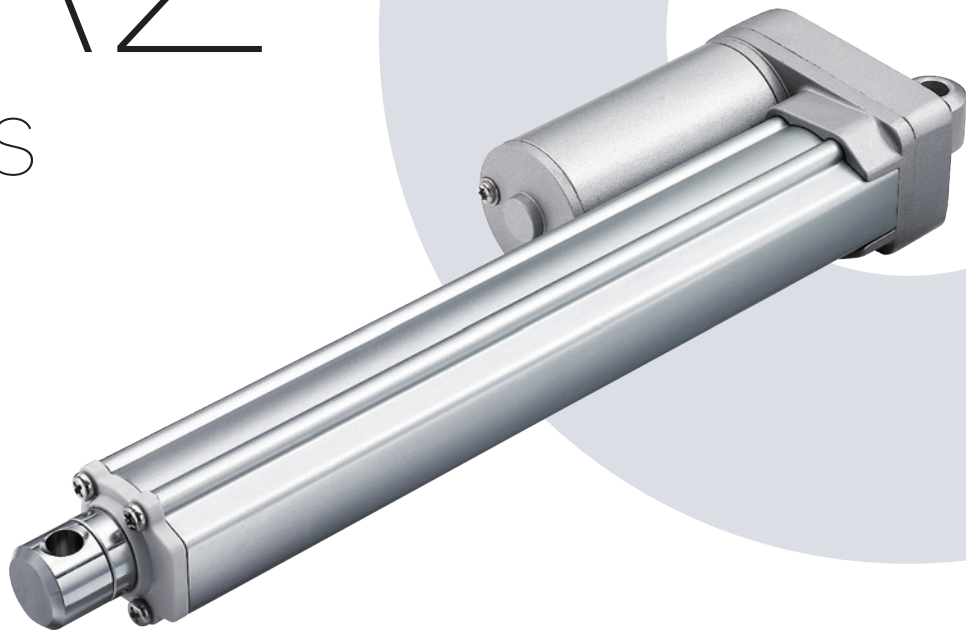


General Features

Max. load	3,500N (push); 2,000N (pull)	Output signals	Hall sensors, POT
Max. speed at max. load	2.4mm/s	Options	Grease chamber
Max. speed at no load	56.5mm/s	Voltage	12/24V DC; 12/24V DC (PTC)
Retracted length	≥ 200 mm (depending on chosen options)	Operational temperature range	-25°C~+65°C
IP rating	IP69K	Operational temperature range at full performance	+5°C~+45°C
Stroke	20~1000mm		

TA2

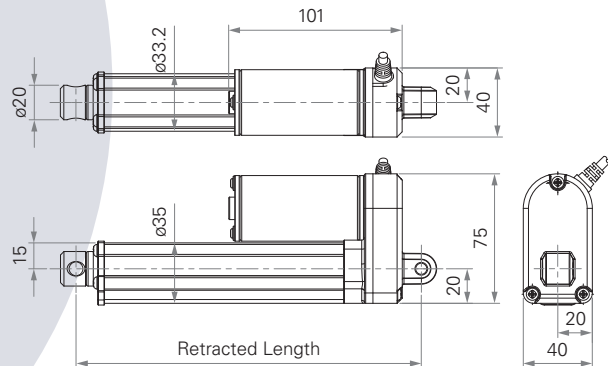
series



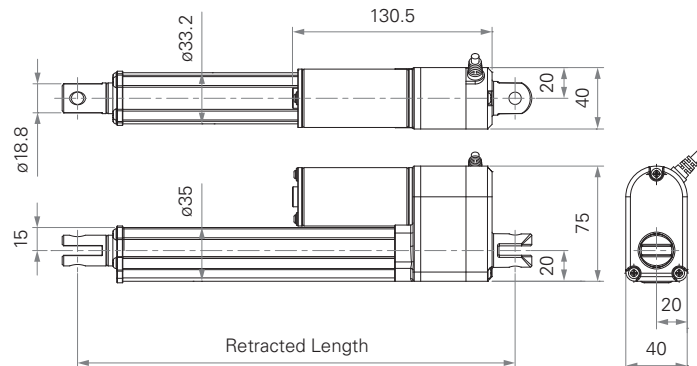
Standard Dimension

(mm)

Without Output Signal



With Output Signal



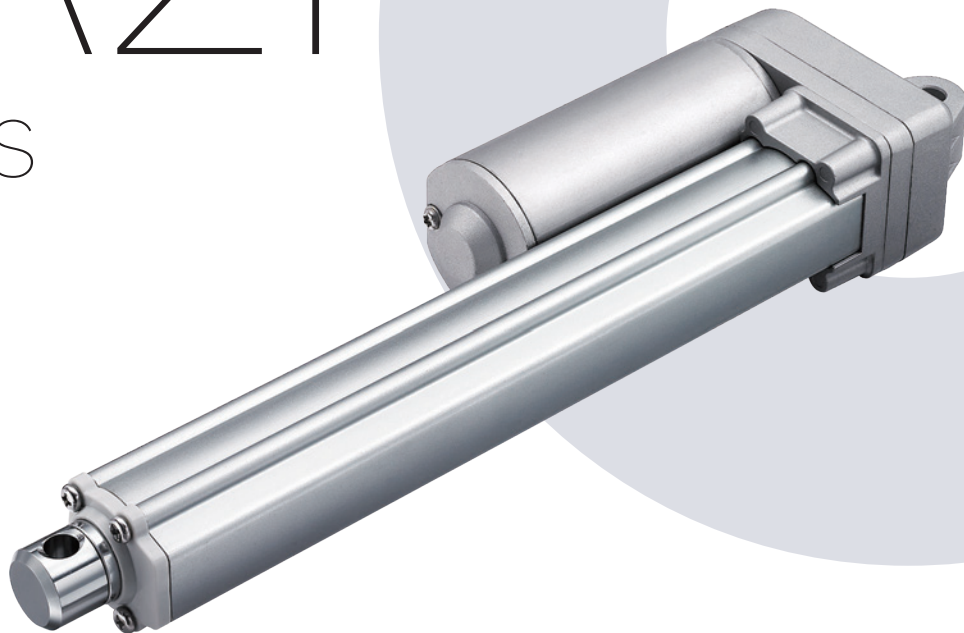
General Features

Max. load	1,000N (push/pull)
Max. speed at max. load	7.6mm/s
Max. speed at no load	67.5mm/s
Retracted length	≥ Stroke + 105mm (without output signals)
IP rating	IP66D
Certificate	IEC60601-1, ES60601-1, EMC
Stroke	20~1000mm

Output signals	POT, Reed, Hall sensors
Voltage	12/24/36/48V DC 12/24/36/48V DC (PTC)
Color	Silver
Operational temperature range	+5°C~+45°C (Load < 500N) -25°C~+65°C (Load ≥ 500N)
Operational temperature range at full performance	+5°C~+45°C

TA2P

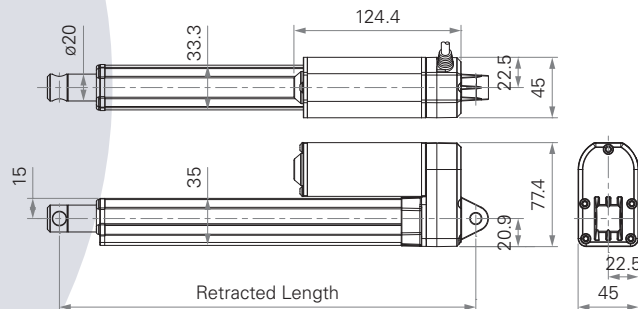
series



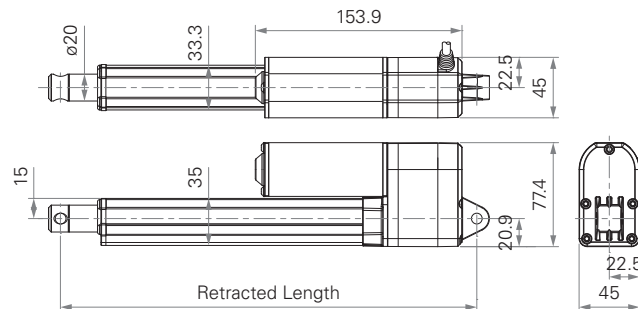
Standard Dimension

(mm)

Without Sensor or with Hall Sensors



With POT or Reed Sensor

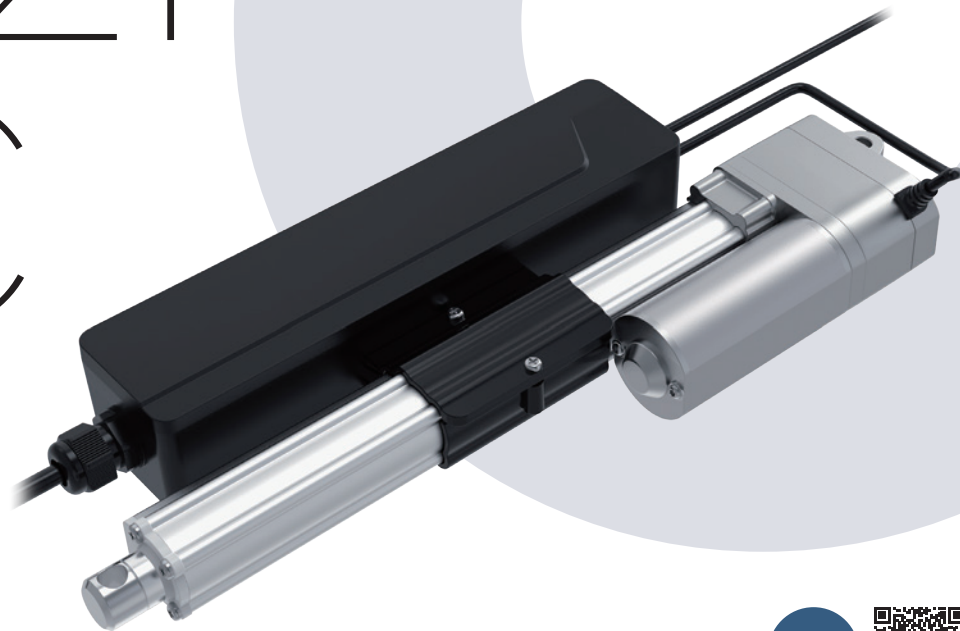


General Features

Max. load	3,500N (push); 2,000N (pull)
Max. speed at max. load	2.4mm/s
Max. speed at no load	56.5mm/s
Retracted length	≥ Stroke + 108mm (with Hall sensors or without output signals)
IP rating	IP66D
Certificate	IEC60601-1, ES60601-1, EN 61000-6-1, EN 61000-6-3, UL73

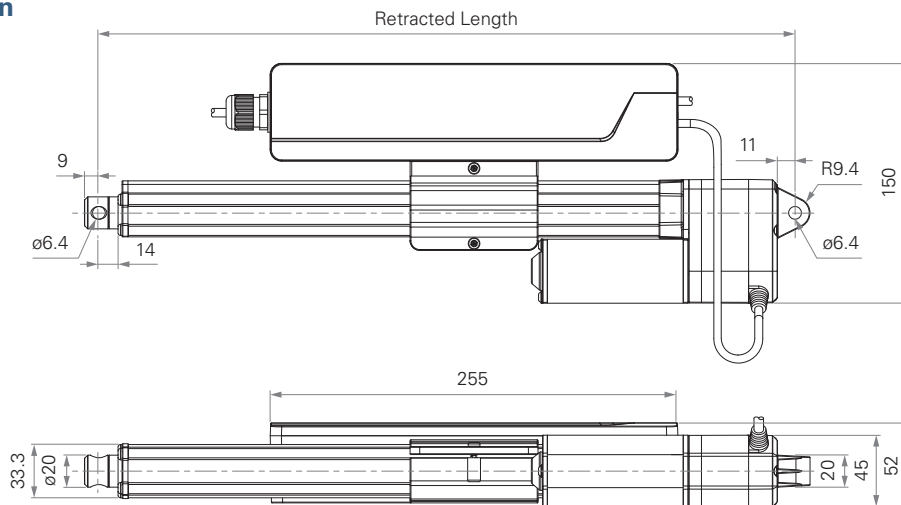
Stroke	20~1000mm
Output signals	POT, Reed, Hall sensors
Voltage	12/24/36V DC 12/24V DC (PTC)
Color	Silver
Operational temperature range	-25°C~+65°C
Operational temperature range at full performance	+5°C~+45°C

TA2P AC series



Standard Dimension

(mm)



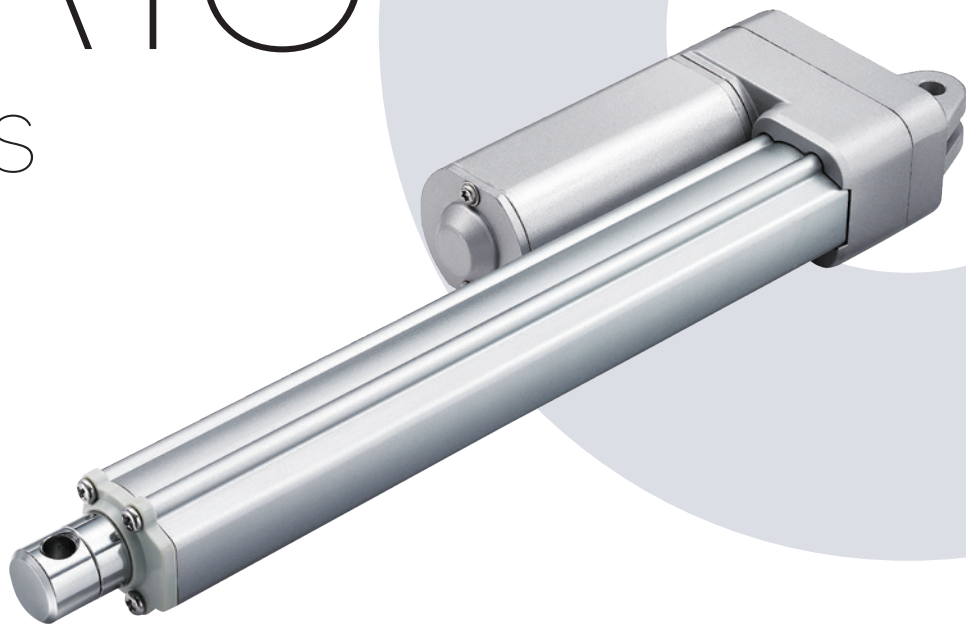
General Features

Max. load	2,000N (push/pull)
Max. speed at max. load	7.5mm/s
Max. speed at no load	52mm/s
Retracted length	> 235mm (depending on chosen options)
IP rating	IP66D

Stroke	20~1000mm
Output signals	POT
Voltage	100~240V AC
Operational temperature range	-25°C~+65°C
Operational temperature range at full performance	+5°C~+45°C

TA16

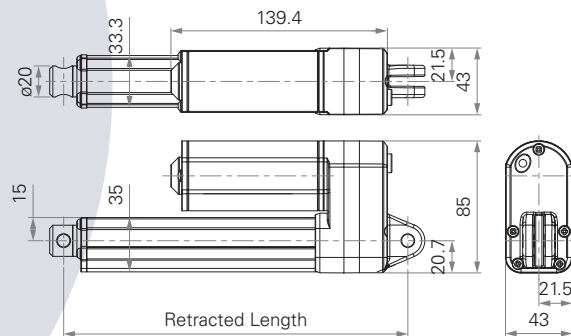
series



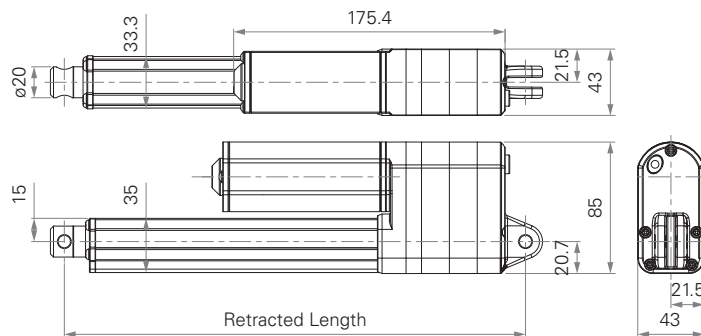
Standard Dimension

(mm)

Without Output Signal or with Hall Sensors



With POT



General Features

Max. load	3,500N (push/pull)
Max. speed at max. load	6.2mm/s
Max. speed at no load	58.2mm/s
Retracted length	≥ Stroke + 112mm
IP rating	IP66D
Certificate	IEC60601-1, ES60601-1, IEC60601-1-2, UL962, EMC
Stroke	20~600mm

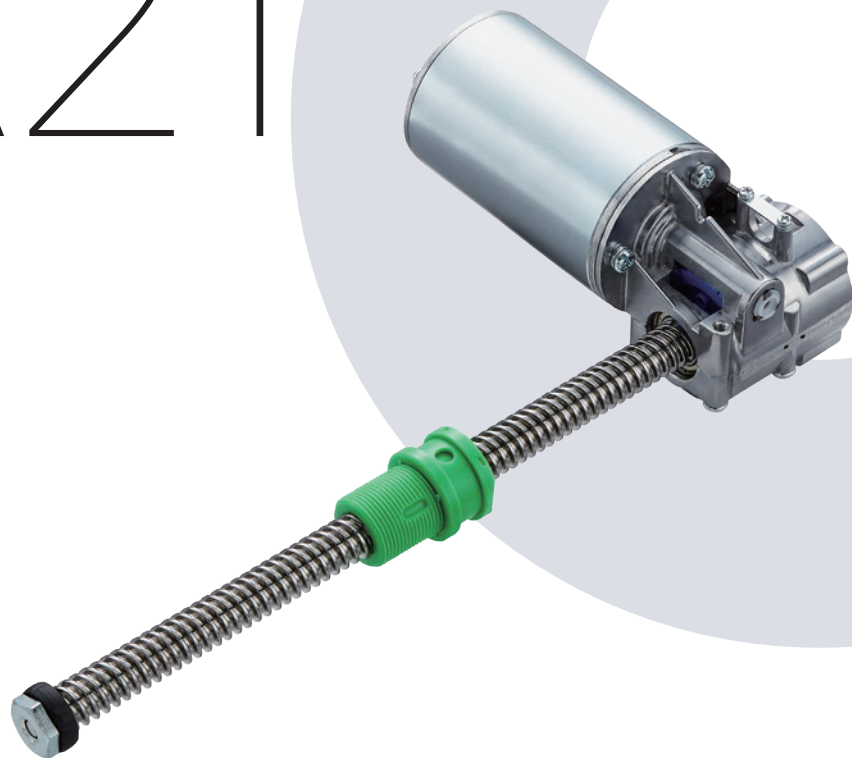
Output signals	POT, Hall sensor(s)
Options	Motor brake
Voltage	12/24/36/48V DC 12/24V DC (PTC)
Color	Silver
Operational temperature range at full performance	+5°C~+45°C

With very low noise, small size for easy installation

Suitable for patient hoist application

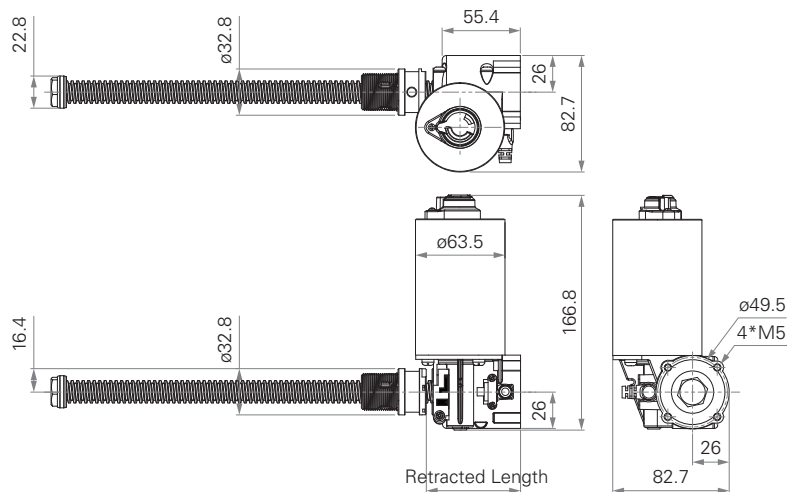
TA21

series



Standard Dimension

(mm)

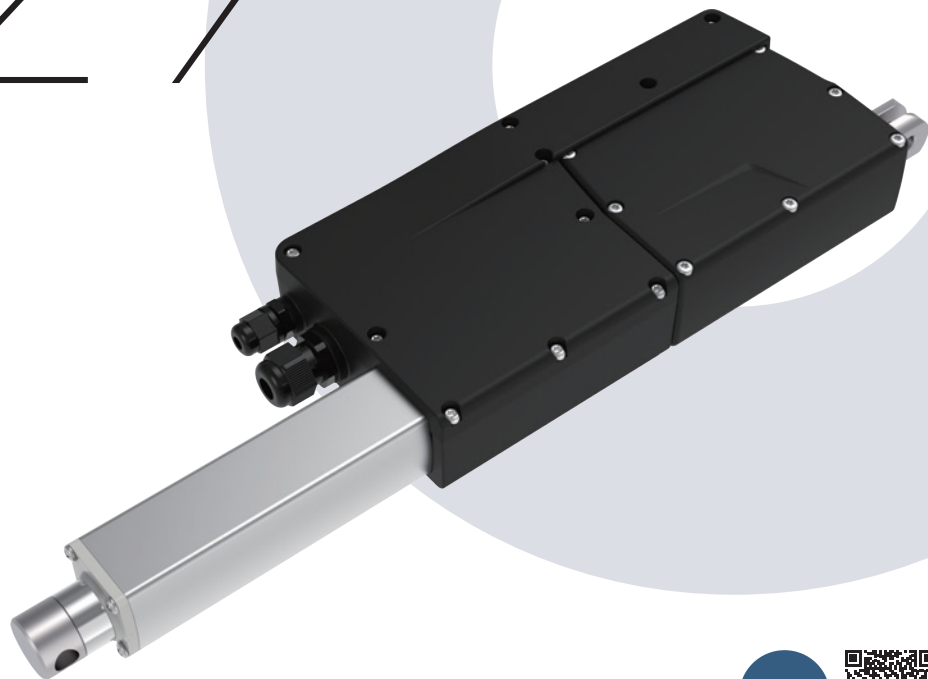


General Features

Max. load	10,000N (push); 6,000N (pull)
Max. speed at max. load	6.3mm/s
Max. speed at no load	24.7mm/s
Retracted length	≥ 67mm
Certificate	UL962

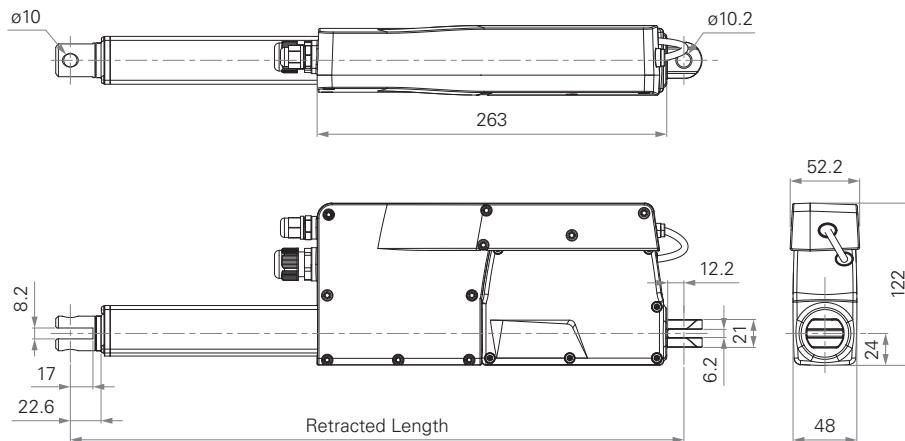
Stroke	25~400mm
Output signals	Hall sensors, Reed sensor
Voltage	24V DC; 24V DC (UL)
Color	Black, grey
High design flexibility	

TA29 AC series



Standard Dimension

(mm)



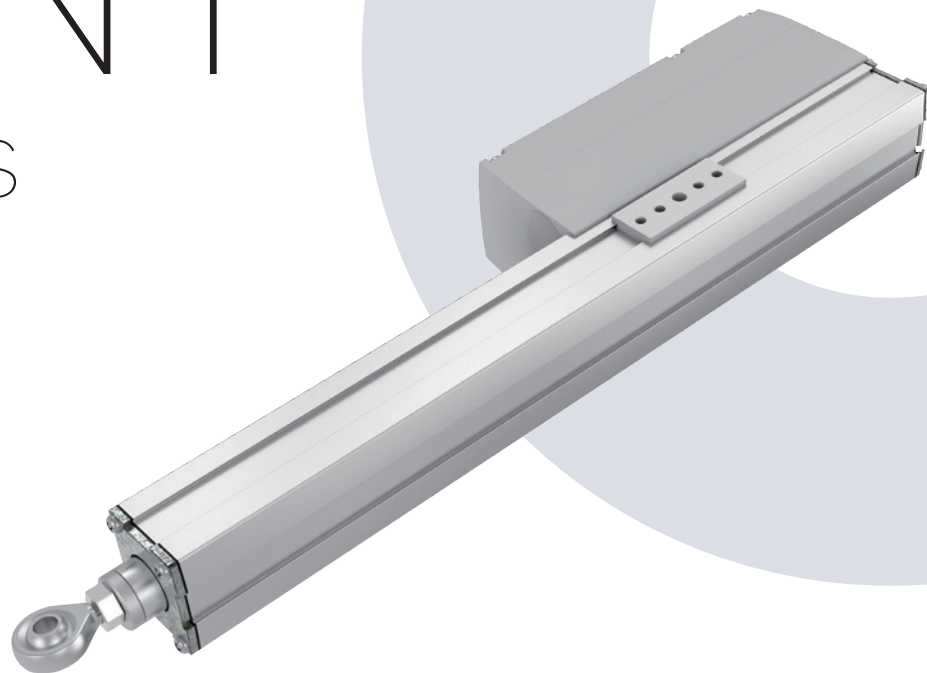
General Features

Max. load	4,000N (push/pull)
Max. speed at max. load	4.5mm/s
Max. speed at no load	5.5mm/s
Retracted length	> 302mm (depending on chosen options)
IP rating	IP66W

Stroke	25~600mm
Output signals	POT
Voltage	110~240V AC
Color	Black, grey
Operational temperature range	+5°C~+45°C

VN1

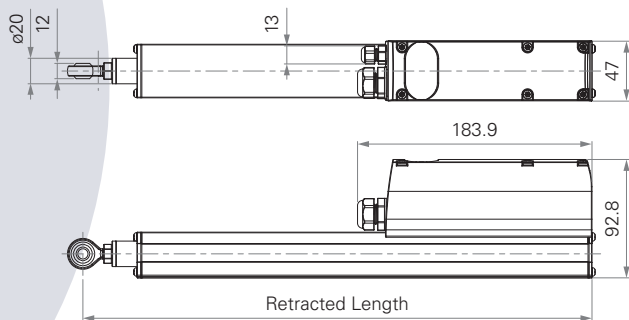
series



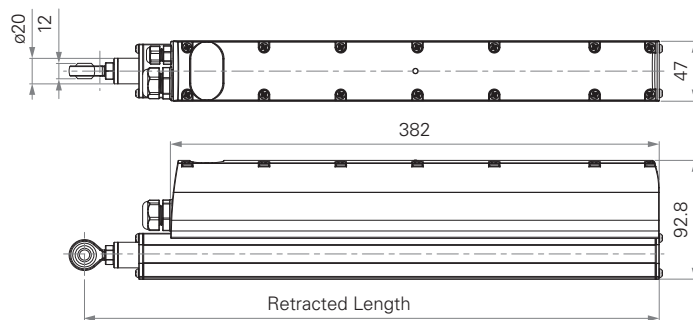
Standard Dimension

(mm)

With DC Voltage



With AC Voltage



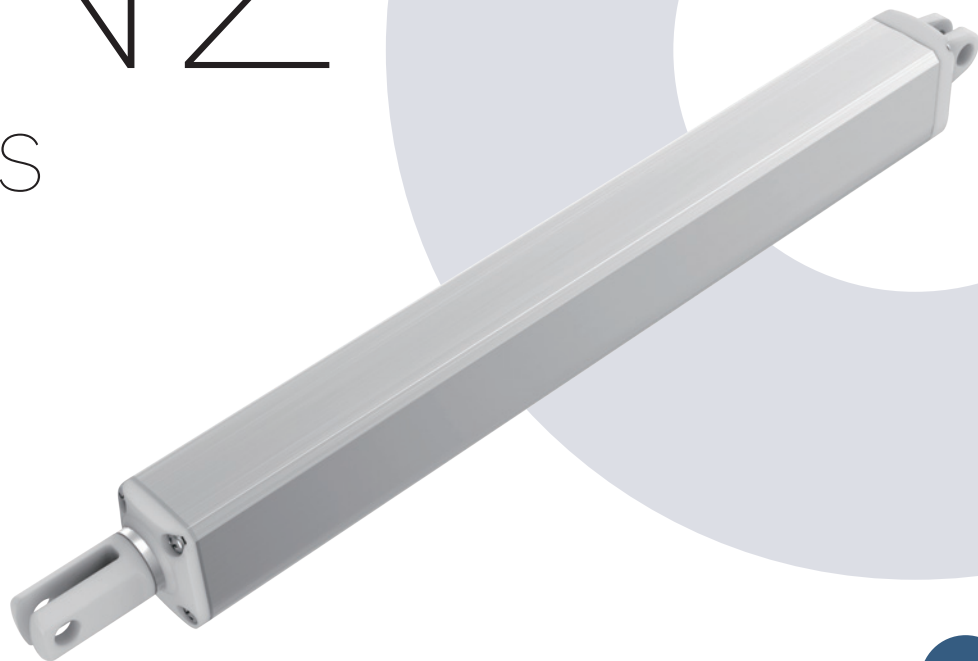
General Features

Max. load	3,500N (push/pull)
Max. speed at max. load	4.2mm/s
Max. speed at no load	10.4mm/s
Retracted length	≥ 181mm (DC version, w/o T-Smart; depending on chosen options); ≥ 401mm (AC version; depending on chosen options)
IP rating	IP66
Stroke	20~500mm

Output signals	Hall sensors
Options	Safety nut, window seal mechanism, T-Smart
Voltage	12/24V DC; 100~240V AC (50Hz)
Color	Black, grey
Operational temperature range	-15°C~+50°C
Operational temperature range at full performance	+5°C~+45°C

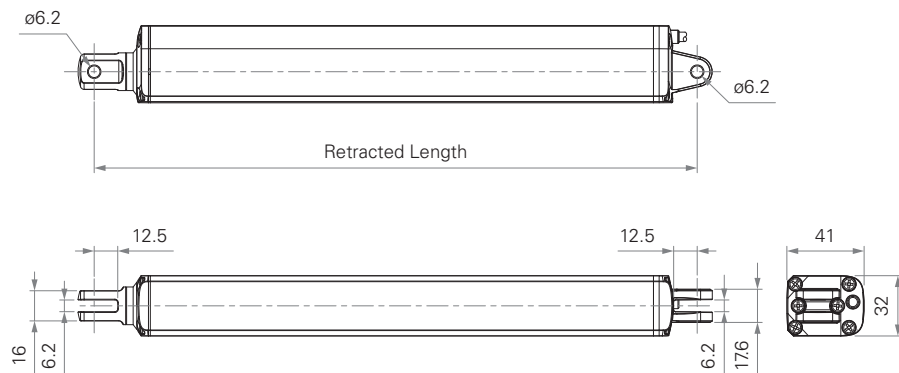
VN2

series



Standard Dimension

(mm)



General Features

Max. load	500N (push/pull)
Max. speed at max. load	8.35mm/s
Max. speed at no load	10.8mm/s
Retracted length	≥ Stroke + 189mm
IP rating	IP66
Stroke	20~500mm

Output signals	Hall sensors
Voltage	12/24V DC; 12/24V DC (thermal protector)
Color	Black, white, grey
Operational temperature range	-25°C~+65°C
Operational temperature range at full performance	+5°C~+45°C

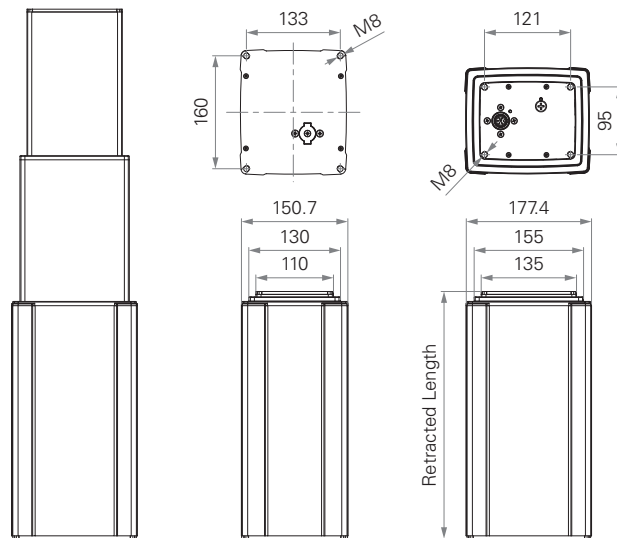
TL3

series



Standard Dimension

(mm)



General Features

Max. load	4,000N (push)	Dimension of outer tube	177.4*150.7mm rectangular
Self-locking force	4,000N	Stages	3-stage
Max. dynamic bending moment	1,000Nm	Stroke	250~1200mm
Max. static bending moment	2,000Nm	Certificate	IEC60601-1, EMC
Max. speed at max. load	13.7mm/s	Output signals	POT, Hall sensors
Max. speed at no load	39mm/s	Options	Direct cut system
Retracted length	$\geq \text{Stroke}/2 + 150\text{mm}$	Voltage	12V DC; 24V DC (thermal control)
IP rating	IPX6	Operational temperature range	+5°C~+45°C

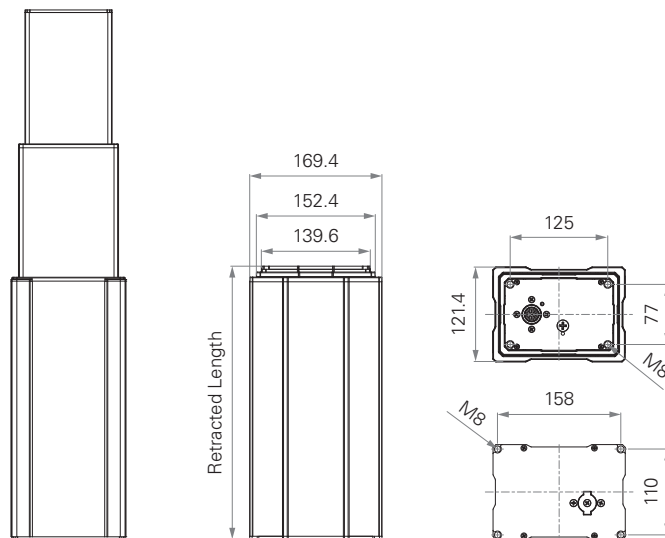
TL17

series



Standard Dimension

(mm)



General Features

Max. load	2,000N (push)
Max. dynamic bending moment	250Nm
Max. static bending moment	500Nm
Max. speed at max. load	11.5mm/s
Max. speed at no load	41mm/s
Retracted length	$\geq \text{Stroke}/2 + 150\text{mm}$
IP rating	IPX6
Dimension of outer tube	169.4*121.4mm rectangular

Stages	3-stage
Stroke	250~1200mm
Certificate	IEC60601-1, ES60601-1, IEC60601-1-2
Output signals	Hall sensors
Voltage	12V DC; 24V DC (PTC)
Color	Silver, black
Operational temperature range	+5°C~+45°C

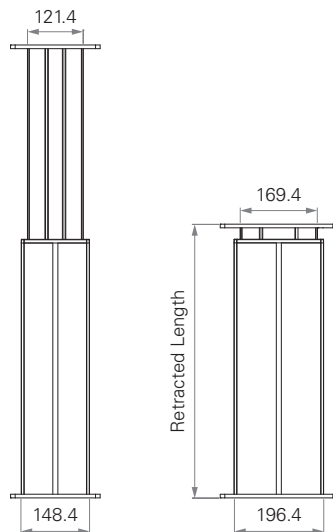
TL18

series



Standard Dimension

(mm)

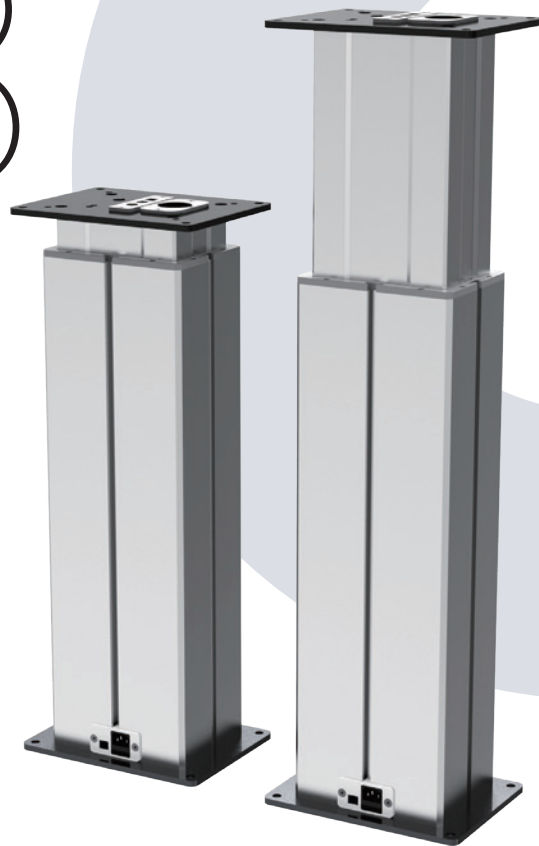


General Features

Max. load	4,500N (push)
Self-locking force	4,500N
Max. dynamic bending moment	250Nm
Max. static bending moment	500Nm
Max. speed at max. load	6.6mm/s
Max. speed at no load	45mm/s
Retracted length	$\geq \text{Stroke} + 147\text{mm}$
Dimension of outer tube	196.4*148.4mm rectangular

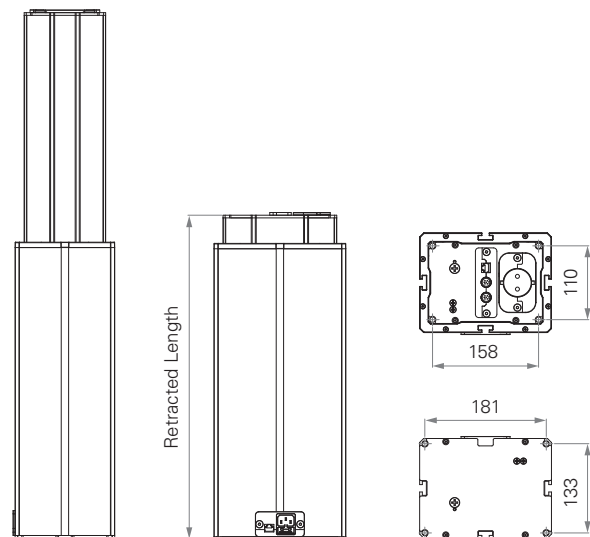
Stages	2-stage
Stroke	100~1000mm
Certificate	IEC60601-1, ES60601-1, IEC60601-1-2, UL73, EMC
Output signals	Hall sensors
Options	Cable exit from top or bottom side, direct cut system
Voltage	12/24V DC
Operational temperature range	+5°C~+45°C

TL18 AC series



Standard Dimension

(mm)



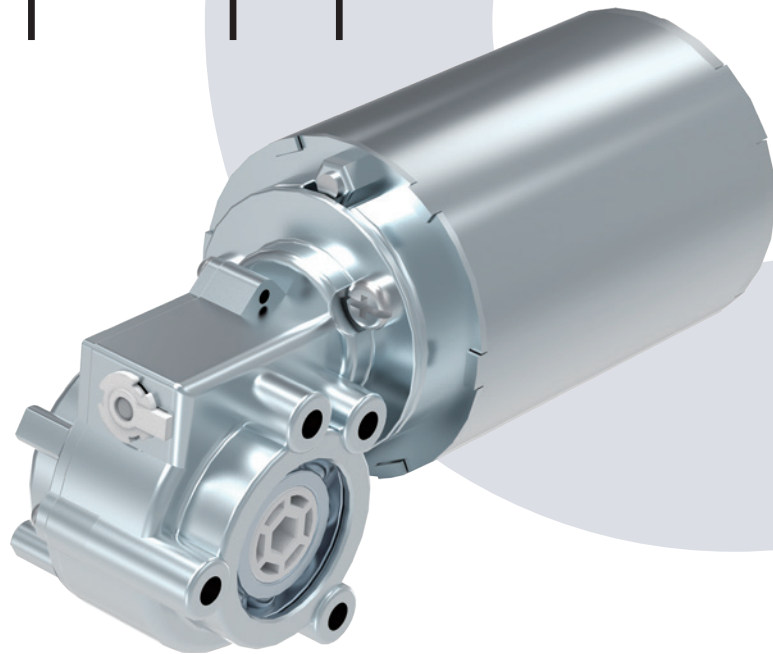
General Features

Max. load	4,500N (push)
Self-locking force	4,500N
Max. dynamic bending moment	250Nm
Max. static bending moment	500Nm
Max. speed at max. load	6.6mm/s
Max. speed at no load	45mm/s
Retracted length	≥ 383mm

Dimension of outer tube	196.4*148.4mm rectangular
Stages	2-stage
Stroke	20~700mm
Options	AC cable exit from top end, top side; Ethernet socket
Operational temperature range	+5°C~+45°C

TGM1

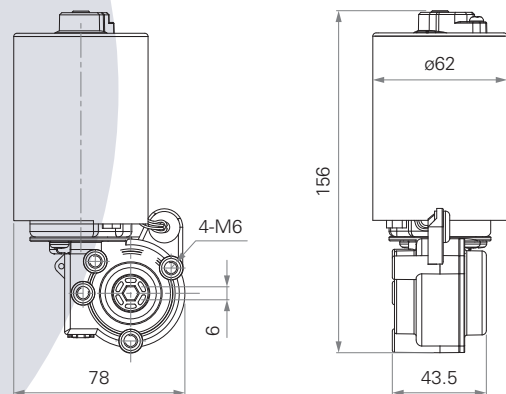
series



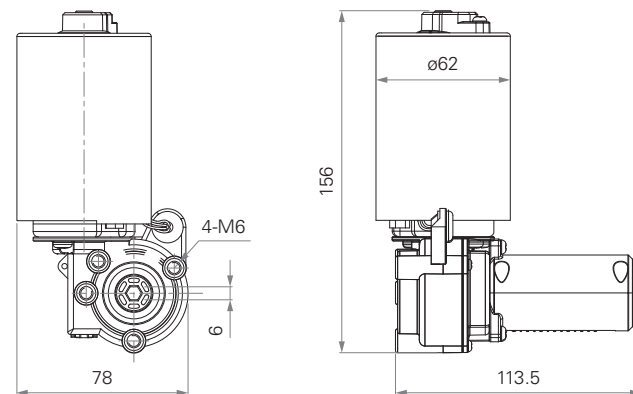
Standard Dimension

(mm)

Without TES2



With TES2



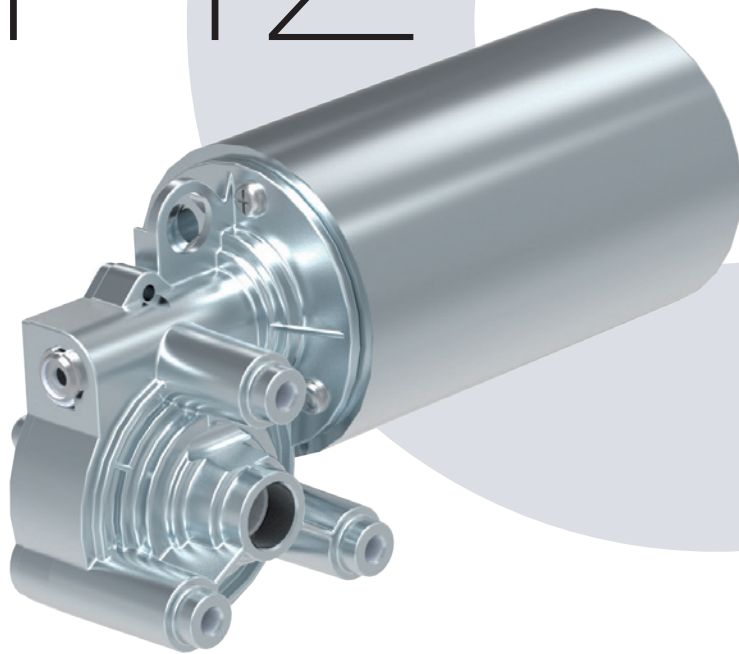
General Features

Max. rated torque	7.4Nm
Max. speed at max. load	72RPM ($\pm 5\%$)
Max. speed at no load	262.5RPM ($\pm 5\%$)
Certificate	UL962
Output signals	Hall sensors

Voltage	12, 24V DC or 24V DC (PTC)
Operational temperature range at full performance	+5°C~+45°C
Hexagon hole for the shaft by 6 or 9.1mm diameter	
Low noise	

TGM2

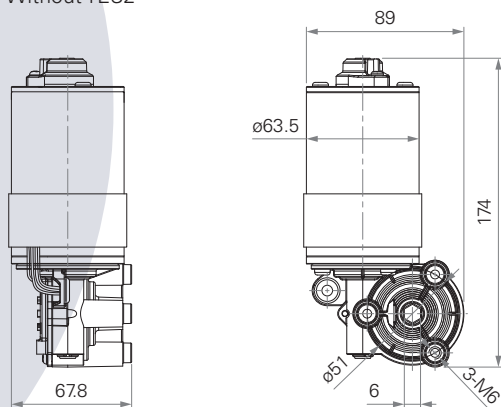
series



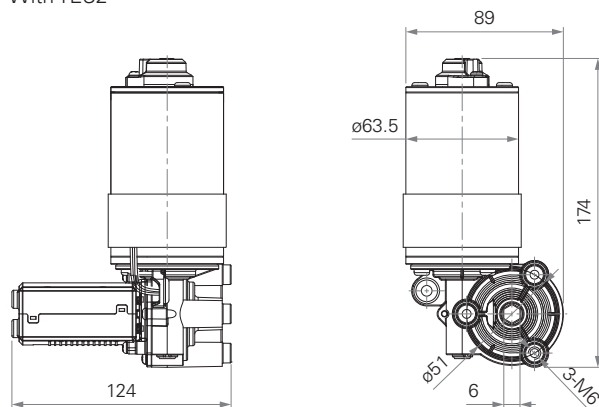
Standard Dimension

(mm)

Without TES2



With TES2



General Features

Max. rated torque	18.3Nm
Max. speed at max. load	51RPM ($\pm 5\%$)
Max. speed at no load	108RPM ($\pm 5\%$)
Output signals	Hall sensors

Options

Voltage

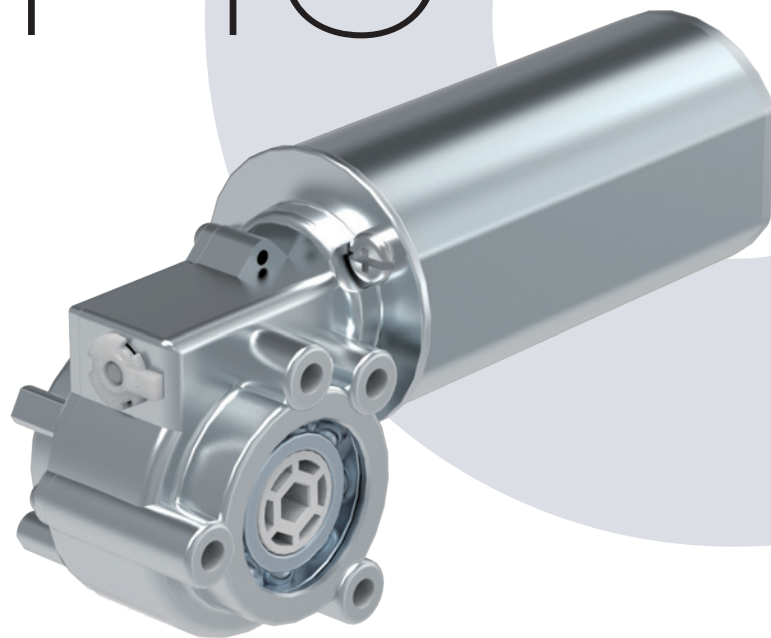
Low noise

Motor brake

12V DC or 24V DC
(thermal protector)

TGM3

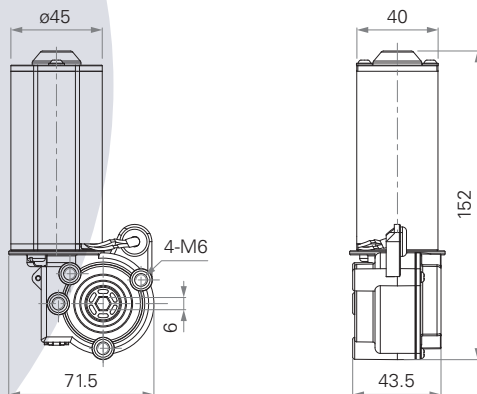
series



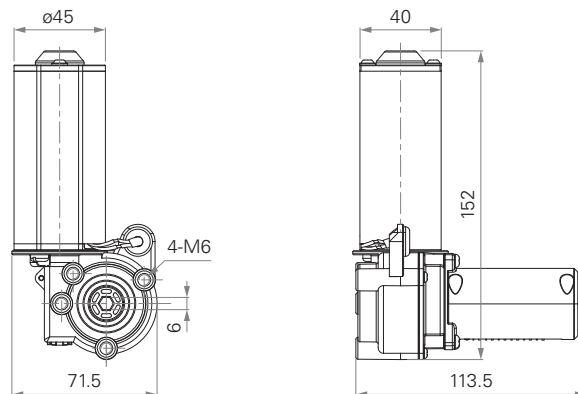
Standard Dimension

(mm)

Without TES2



With TES2



General Features

Max. rated torque	4.6Nm
Max. speed at max. load	61RPM (±5%)
Max. speed at no load	259RPM (±5%)
Output signals	Hall sensors

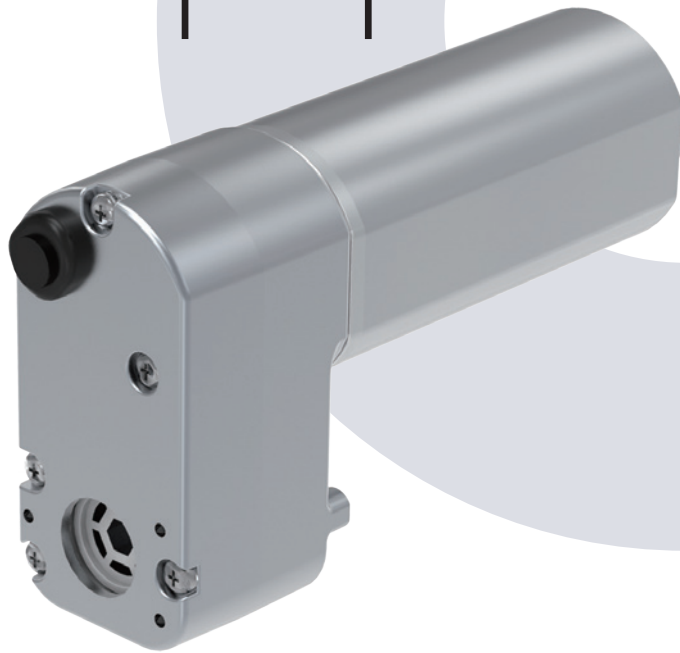
Voltage	24V DC
Operational temperature range at full performance	+5°C~+45°C

Hexagon hole for the shaft by 6mm diameter

Low noise

TGM4

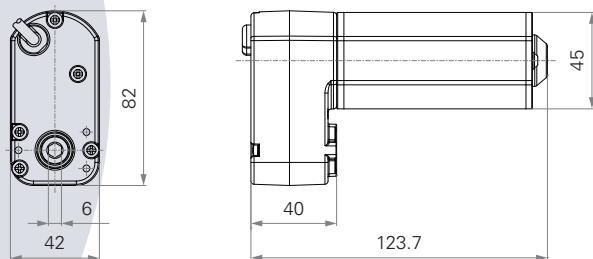
series



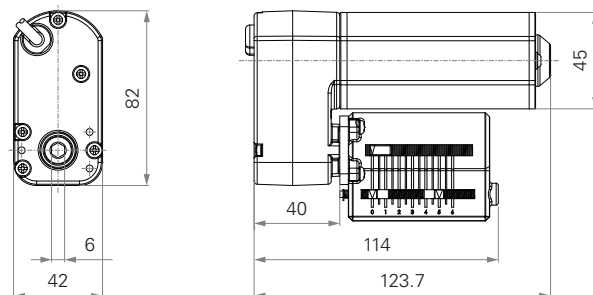
Standard Dimension

(mm)

Without TES2



With TES2



General Features

Max. rated torque	6Nm
Max. speed at max. load	98RPM ($\pm 5\%$)
Max. speed at no load	219RPM ($\pm 5\%$)
Output signals	Hall sensors
Options	Motor brake

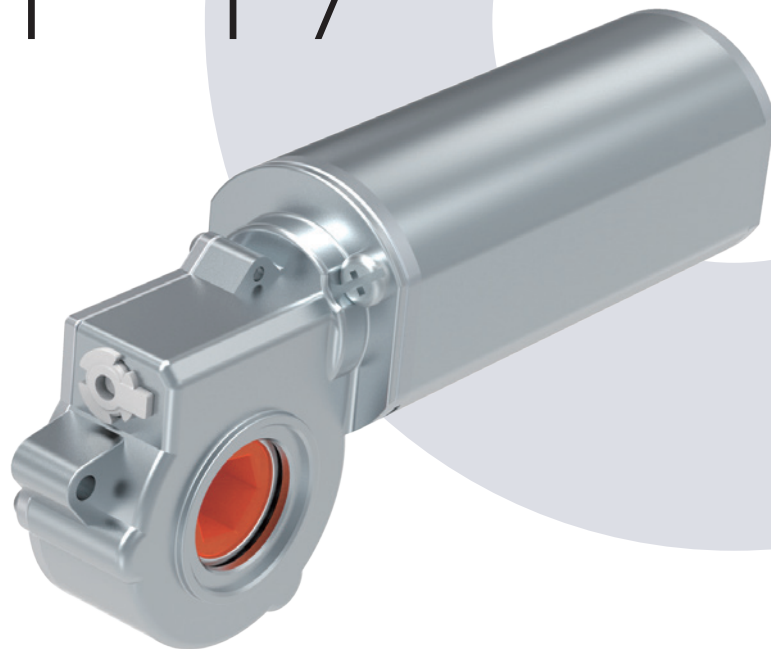
Voltage	24V DC
Operational temperature range at full performance	+5°C~+45°C

Hexagon hole for the shaft by 9mm diameter

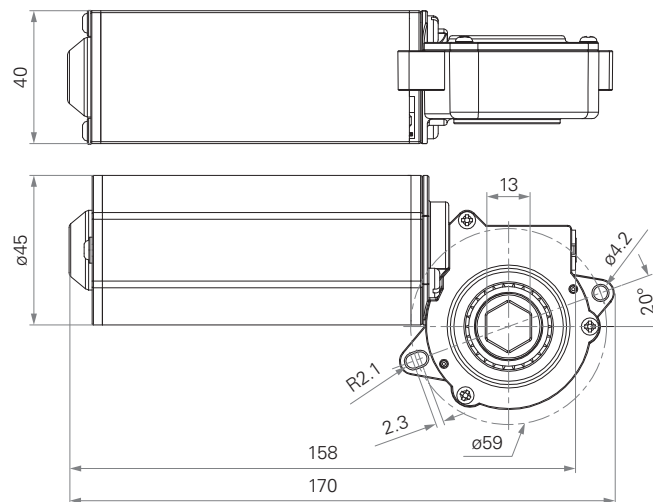
Low noise

TGM7

series



(mm)

**Max. rated torque**

7.2Nm

Max. speed at max. load78RPM ($\pm 5\%$)

Max. speed at no load

355RPM ($\pm 5\%$)

Output signals

Hall sensors

Voltage

24V DC

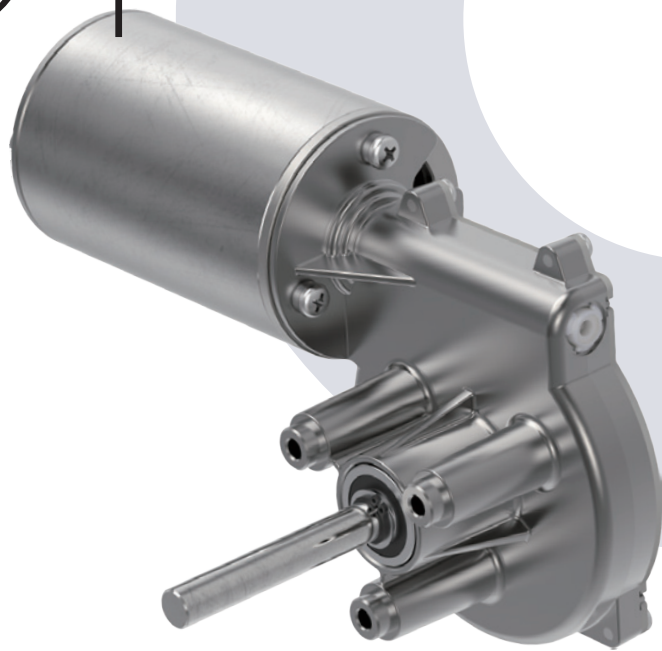
**Operational temperature range
at full performance**

+5°C~+45°C

Low noise

TIG1

series

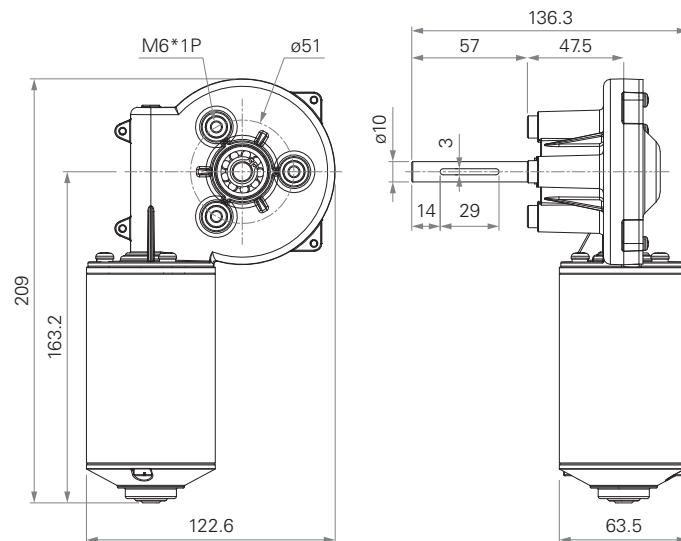


NEW



Standard Dimension

(mm)



General Features

Max. rated torque	60Nm
Max. speed at max. load	24RPM
Max. speed at no load	40RPM
Output signals	Hall sensor(s)

Voltage	12V DC (thermal cutoff)
Operational temperature range at full performance	+5°C~+45°C

Control Boxes



TID1 Series

- Number of motors: 1~2
- Number of controls: 1
- Max. output: 12V DC, 20A;
24V DC, 10A
- IP rating: IP69K



Power Supplies



TIP1 Series

- Transformer type: SMPS
- Input voltage: 90~305V AC
- Max. output: 24V DC, 5A
- IP rating: IP67



TIP2 Series

- Transformer type: SMPS
- Input voltage: 90~305V AC
- Max. output: 24V DC, 13.34A
- IP rating: IP67



TIP3 Series

- Transformer type: SMPS
- Input voltage: 90~305V AC
- Max. output: 24V DC, 20A
- IP rating: IP67



TIP4 Series

- Transformer type: SMPS
- Input voltage: 90~305V AC
- Max. output: 24V DC, 25A
- IP rating: IP67





Accessories



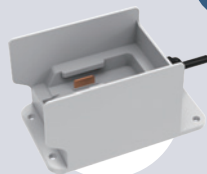
TAD1
Adapter Dongle



TSB1
Switch Box for
Industrial Applications



TWD2
Bluetooth Dongle



TSB2
Battery Holder



Terms of Use

The user is responsible for determining the suitability of TiMOTION products for a specific application. TiMOTION takes great care in providing accurate and up-to-date information on its products. However, due to continuous development, frequent modifications and changes to products may occur without prior notice. It is for this reason that TiMOTION cannot guarantee the correct and actual status of said information on its products, nor can it guarantee the availability of any particular product.

Therefore, TiMOTION reserves the right to discontinue the sale of any product displayed on its website or listed in its catalogues or other written material produced by TiMOTION.

For the most accurate and up-to-date information on our products, please visit TiMOTION's website.

www.timotion.com



Every Day is Earth Day

TiMOTION uses FSC certificated paper in order to help care for our forests, as well as the people and wildlife who call them home.



Taiwan & China

+886 2 2219 6633
sales.tw@timotion.com

Australia

+61 3 8725 0331
sales.tw@timotion.com

Europe

+33 (0)1 74 82 50 51
sales.eu@timotion.com

Japan

+81 6 6713 1188
sales.jp@timotion.com

USA

(704) 708 6924
sales.us@timotion.com

Korea

+82 31 745 1060
sales@timotion.co.kr



For the latest
product information

Updated: Nov 2022